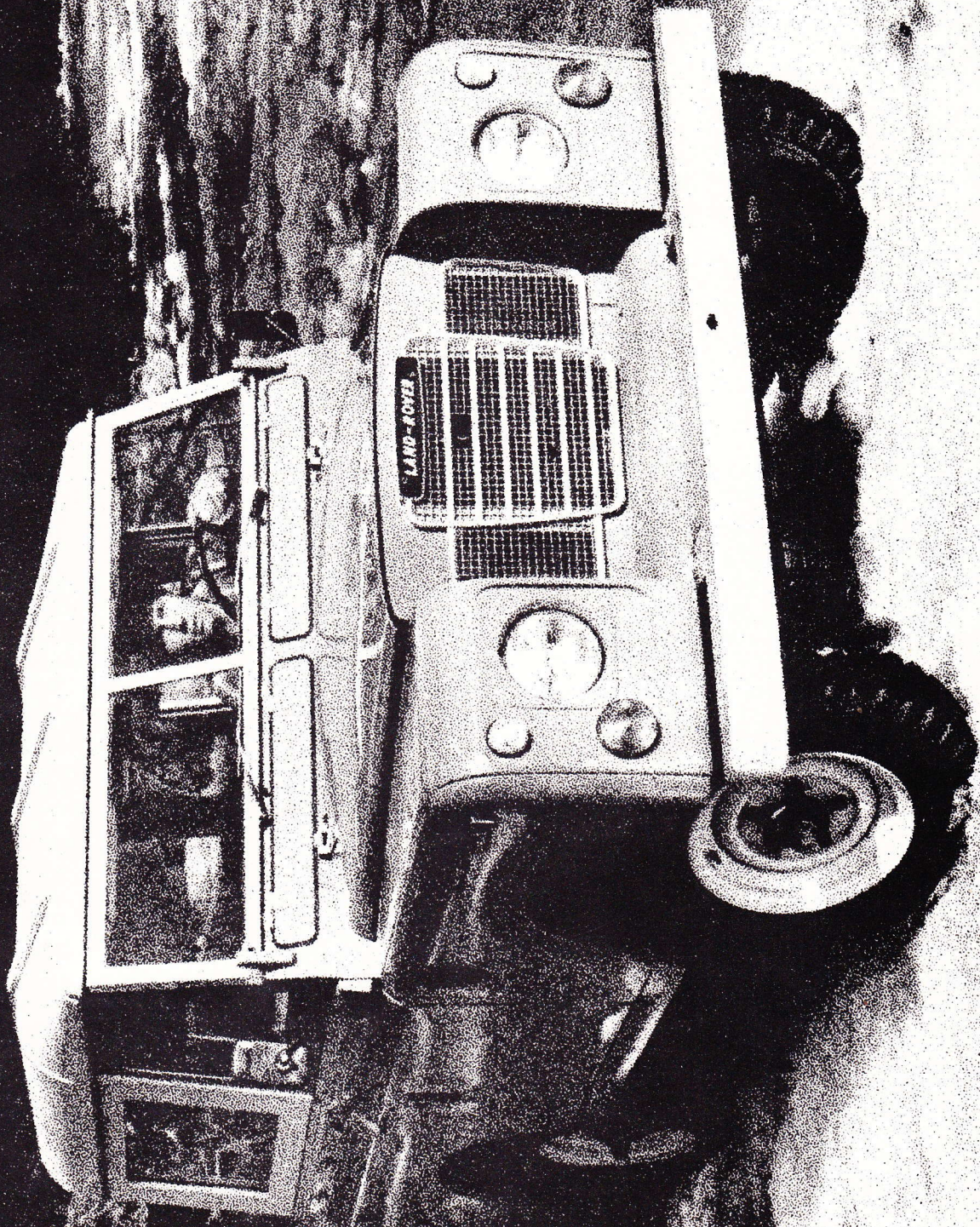


Land Rover



BRITISH
LEYLAND



New Features

The new Land Rover Series III Deluxe Hardtop features extensive engineering improvements, adding to the famous go-anywhere capability of the vehicle, which has become the star of countless African safari films; and which has established exotic world records in out of the way places, such as the world's altitude record for cars at over 17,500 ft. accomplished in Bolivia. This latest Land Rover meets all current U.S. Federal safety and air-pollution requirements.

The new Series III has a redesigned transmission with full synchromesh in all four forward speeds and shorter gear lever travel for easier shifting. This is also aided by a lighter action clutch.

The basic Land Rover transmission is equipped with a two-speed transfer box that provides 4-wheel-drive in low range, and a choice of 2 or 4-wheel drive in high range, giving the equivalent of eight forward and two reverse gear ratios.

Changing from high to low ranges multiplies overall gear ratios by 2.35, resulting in tremendous traction and pulling power. On a level surface a Land Rover can haul three times its own weight. It can ascend and descend inclines as steep as 49 degrees.

Styling changes include the replacement of the former wire mesh radiator grille with a modern injection molded silver grey grille, and a new non-reflective black fascia with useful parcel shelf and padded guard rail. Instruments are repositioned exactly opposite the driver, with fresh air outlets on either side of the fascia from the increased capacity heater. Dash vents incorporate fly screens as standard equipment. The new padded steering wheel and column incorporate a combined turn indicator control, horn and dip switch.

Other improvements include brake drums with increased heat dissipating qualities; a high capacity alternator as standard equipment; electrical fuses housed in an easy to get at fuse box on the steering column nacelle; and wiring harness redesigned to incorporate plug and socket connectors for easy servicing.

Standard Equipment

Full length metal top with sliding side windows, security catches and anti-burst door locks. Side-hinged rear door with external locking handle. Deluxe seating for seven. Front: Two outer seats forward adjusting. Fixed center seat. Rear: Two folding, side facing bench-seats. Deluxe interior trim including map pockets and dome light. Rubber carpets (front and rear), Ash tray. Interior and exterior spare wheel carriers. Windshield ventilators incorporating fly screens. Shoulder and lap safety harnesses for two front seats and safety belts for all seven seats. Hazard warning flashers and dual braking system. Door mounted boomerang mirrors and interior safety mirror. Four-speed synchromesh transmission with transfer box giving eight forward and two reverse speeds. Fully floating front and rear axles. Oil pressure gauge. Windshield washers. Back-up lights. Tool kit, wheelbrace, jack and starting crank. Towing pintle. Fresh-air heater and defrosters. Engine emission controls. Alternator. Heavy duty 9 1/2" clutch. Goodyear 710 x 15 "Ultra-Grip" tires. Side Marker Lights.

Optional Extra Equipment, Factory Fitted

Universal Joint Covers, Heavy Duty Towing Pintle, Extra Heavy Duty Rear Springs and Front and Rear Shock Absorbers, Rear Power Take-Off, Center Power Take-Off, Extended Towing Plate (rear step removed), Front Lifting and Towing Rings, Tropical Roof, Spare-Wheel Carrier on Hood, Locking Hasp for Hood, Reinforced Front Axle Casing, Locking Hasp for Fuel Filler, Folding Steps for Side Doors (2), Sun Visors (2), 8-Bladed Fan, Radio Inter-

ference Suppressors, Trip Speedometer, Steering Damper, Twin Horns, Rear Step, Engine Speed Control (manual), Radiator Chaff Guard.

Note: Above items should be ordered for fitment during vehicle production. Locally installed items involve separate shipment of parts plus labor costs which can be considerably more expensive.

Specifications

Power Unit. Four cylinders. Overhead inlet and exhaust valves. Bore 3.562 in., stroke 3.5 in., capacity 139.5 cu. in. 2 1/4 litres. Maximum torque 115 lb. ft. at 1,500 r.p.m. Compression ratio 8 to 1.

Cylinders. Monobloc, cast integral with crankcase.

Cylinder Head. Detachable, cast iron and carrying all valve gear.

Crankshaft. Forged steel three bearing. Fully balanced and with counterweights.

Main Bearings. Three, thin shell, steel-backed copper-lead. Thrust taken at center bearing.

Camshaft. Forged steel. Four bearings, white metal lined, steel backed. Drive by Duplex roller chain. Chain tension maintained by self-adjusting jockey sprocket controlled by coil compression spring and oil pressure.

Pistons. Low expansion aluminum alloy, tin plated. Two compression rings, and one scraper ring. Fully floating wrist pins.

Connecting Rods. Forged steel with thin shell steel-backed copper-lead crankshaft bearings.

Ignition. Coil and battery, automatic advance. Alternator. Spark plugs Champion UN12Y.

Battery 12v. 57 amp. hr. Negative earth system.

Fuel Supply. 12-gallon (45 litres) tank under right-hand seat.

Carburetor. Downdraft. Zenith 36 IVE.

Air Cleaner and Silencer. Oil-bath type with built-in centrifugal pre-cleaner.

Cooling System. Pump and fan, thermostatically controlled. Capacity 17.1 pints Pressurized.

Lubrication. By pressure from gear-type pump forcing oil to all bearings, timing chain and valve gear. Full-flow oil filter. Capacity 13 pints.

Clutch. Hydraulically operated single dry plate, 9 1/2" dia. Diaphragm spring.

Transmission. Transmission to rear and front axles by open propeller shaft via two-speed transfer box.

Gears. Four forward speeds and reverse. Two-speed transfer box in conjunction with main gearbox gives eight forward speeds and two reverse.

Ratios: Main Gearbox.

	Transfer Box High Ratio	Transfer Box Low Ratio
First Gear	19.88	40.70
Second Gear	12.00	24.60
Third Gear	8.05	16.50
Top Gear	5.40	11.10
Reverse Gear	21.66	44.30

Rear Axle. Fully floating, spiral bevel type. Ratio 4.7:1.

Front Axle. Fitted with differential similar to rear axle. Drive to front wheels through totally enclosed universal joints.

Brakes. Hydraulically operated foot brakes requiring light pedal pressure and infrequent adjustment. Mechanically actuated handbrake operates on transmission shaft to rear axle.

Steering. Worm and nut with recirculating ball; variable ratio 15.6:1 straight ahead, 23.8:1 full lock. Right- or left-hand steering as required.

Chassis. Side and cross members of box section forming exceptionally rigid assembly.

Springs. Semi-elliptic front and rear. Telescopic type shock absorbers front and rear.

Tires. Goodyear 710 x 15—Ultra-Grip (suburbanite).

Maximum Draw Bar Pull. 4,000 lb. (1,800 kg.).

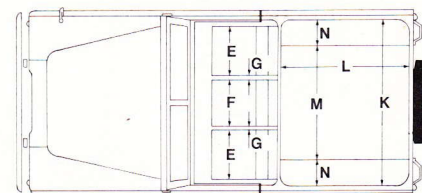
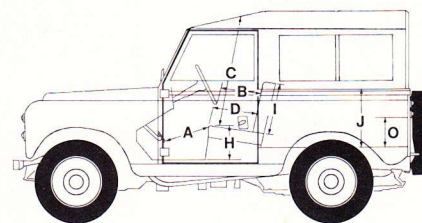
Body. Body panels of non-corrodible light alloy, all external steel fittings heavily galvanized.

Overall Dimensions	88 in. Wheelbase	
	English	Metric
Wheelbase	88 in.	2.23 m.
Track	51 1/2 in.	1.31 m.
Ground Clearance	7 in.	177 mm.
Turning Circle	38 ft.	11.58 m.
Overall Length	142 3/8 in.	3.62 m.
Overall Width	64 in.	1.63 m.
Overall Height (max.)	77 1/2 in.	1.97 m.

Payloads (with standard tires)		
On the road	3 persons + 1,000 lb. (450 kg.)	
In the rough	3 persons + 800 lb. (363 kg.)	

Weight	lb.	kg.
In running trim with 6 gals. (22.5 litres) of petrol	2,900	1,315

Interior Dimensions	In.
A Front cushion to accelerator pedal	19:25
B Front squab to steering wheel	14:50
C Headroom front seat (uncomp.)	38:00
D Front to rear of front cushion	15:75
E Width of front cushion	18:00
F Width of front centre cushion	15:00
G Width between front seats	1:00
H Top of front cushion to floor	14:25
I Front squab height	17:75
J Height of body sides	20:00
K Width of body interior	57:00
L Length of body interior	47:50
M Interior body width between wheel boxes	36:25
N Width of wheel boxes	11:50
O Height of wheel boxes	8:50



Body Color Choices. Light Green, Marine Blue, Limestone, and Red.

Free Wheel Hubs, Electric Winches and Snow Plows are available through your dealer.

Prices and specifications are subject to change without notice. Land Rovers are also available for Overseas Delivery.

British Leyland Motors Inc., 600 Willow Tree Road, Leonia, New Jersey 07605

Leyland Motors Sales, Inc., Zone Offices
 620 Industrial Avenue, Paramus, New Jersey
 1957 West 144 Street, Gardena, California 90249
 422 Valley Drive, Brisbane, California 94005
 50371 E. Russell Schmidt Boulevard,
 Mt. Clemens, Michigan 48043
 4610 Tchoupitoulas Street, New Orleans,
 Louisiana 70115